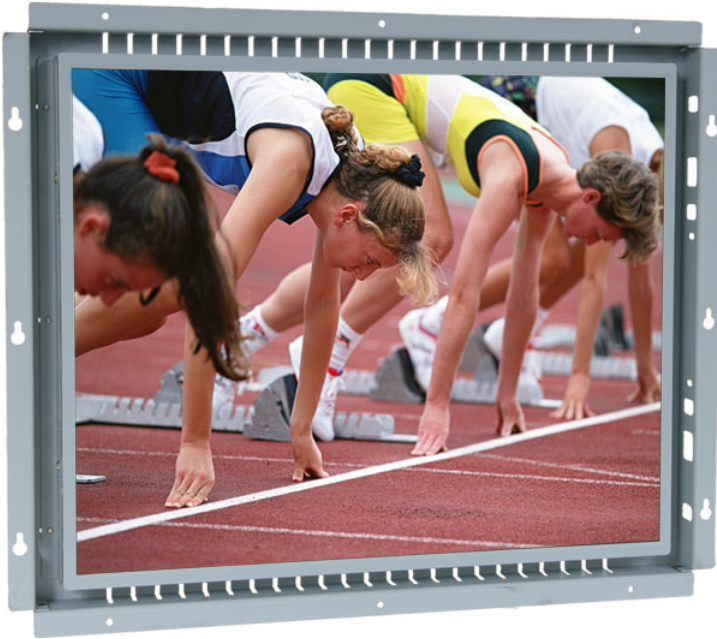


# LBT-19040

## 19 inch Open Frame LED Monitor



### Features and Options

- Compliant with RoHS, UL, CSA, TUV, FCC B, VCCI B, CE TCO 99, TUV Ergo, EPA Energy Star
- Perfect for kiosk, equipment and instrument drop-in designs
- Superior viewing angles, contrast ratio and brightness
- Robust ventilation structure
- Durable **Resistive** and **Surface Acoustic Wave** Touchscreen options
- DVI, Composite and BNC video input options
- Compatible with Caltron's MP-01, MP-02 signage players

### Touchscreen Models

LBT-1904OTEAR	5-Wire Resistive RS232 Touch O/F Monitor
LBT-1904OTEARU	5-Wire Resistive USB Touch O/F Monitor
LBT-1904OTEAS	SAW RS232 Touch O/F Monitor
LBT-1904OTEASU	SAW USB Touch O/F Monitor

### Specifications

#### LCD Panel

TFT Active Matrix Color  
19 inch diagonal viewable  
SXGA 1280 x 1024 resolution (maximum)  
0.294 x 0.294 mm pixel pitch  
16 million color display  
350 nit brightness (typical, 80-90% with touchscreen)  
80% luminance uniformity (minimum)  
1000:1 contrast ratio (typical at 25°C)  
5 ms response time (typical)  
±85°L/R, 80°U/D  
50,000 hours MTBF (minimum at 25°C)

#### Video Interface

VGA compatible analog RGB  
24-80 kHz horizontal scan  
50-75 Hz vertical refresh  
OSD (On Screen Display) keys

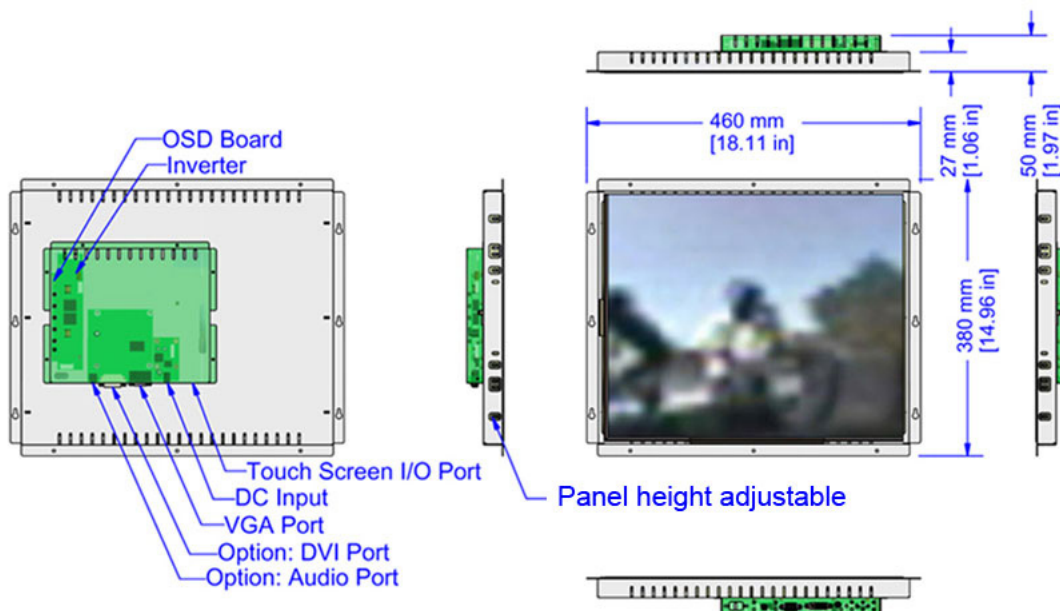
#### Mechanical and Environment

Operation Temperature: 0~50°C [32~122°F]  
Storage Temperature: -20~60°C [-4~140°F]  
Humidity: 85% maximum  
460 x 380 x 50 mm [18.11 x 14.96 x 1.97 inch]  
6 kg [13.2 lbs]

#### Power Management

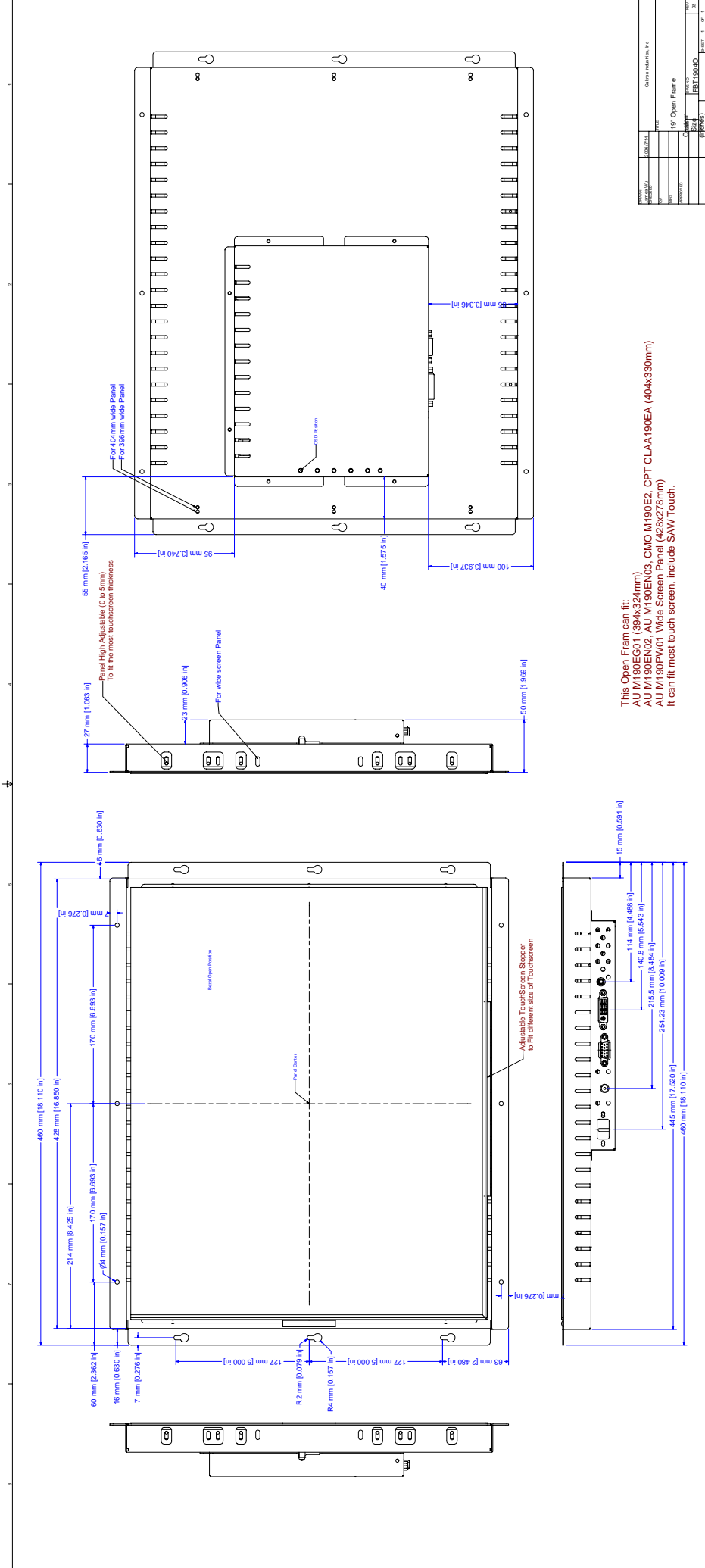
VESA DPMS Standard  
18.46W normal mode  
+3W for Touch Overlay  
12V/5A, 60W, Universal Input Adapter

### Technical Data



**Caltron Industries Inc**

Display Solutions Provider Since 1997



This Open Frame can fit:  
 AU M190EG01 (394x324mm)  
 AU M190EN02, AU M190EN03, GMO M190E2, CPT CLAA190EA (404x330mm)  
 AU M190PW01 Wide Screen Panel (428x278mm)  
 It can fit most touch screen, include SAW Touch.